

# States: Our Critical (Yet Surprising!) Partner in Smart School Siting





[www.PreservationNation.org/walk-to-school](http://www.PreservationNation.org/walk-to-school)

- Over 50 ideas for “top ten” barriers
- Policy and practices
- Six case studies
- Shows multiple benefits of community-centered schools

NATIONAL  
TRUST  
FOR  
HISTORIC  
PRESERVATION®

**Helping Johnny Walk to School**

Policy Recommendations for Removing Barriers  
to Community-Centered Schools

BY RENEE KUHLMAN



NATIONAL TRUST FOR HISTORIC PRESERVATION®



**Reuse existing facilities and infrastructure whenever possible...**





**Encourage coordinated planning...**



# Mandate a meaningful participation from all stakeholders in the planning process



NATIONAL TRUST FOR HISTORIC PRESERVATION

**NATIONAL TRUST FOR HISTORIC PRESERVATION®**



The image shows the exterior of Rosa Parks School at New Columbia Community Campus. The building features a prominent red brick wall on the left side, with two horizontal windows. To the right, there is a large, modern structure with a green metal roof and a series of white, slatted panels. The building is set against a clear blue sky. In the foreground, there is a paved area with some greenery and a bicycle parked near the entrance.

# ROSA PARKS SCHOOL AT NEW COLUMBIA COMMUNITY CAMPUS

**Promote sharing of facilities ...**



An aerial photograph showing a large-scale construction project for a school building. The building's footprint is visible, with several sections already completed and others under construction. The surrounding area includes a parking lot, a road, and a baseball field. The text "Ask if size matters ... or is it location, location, location?" is overlaid on the bottom left of the image.

Ask if size matters ... or is it location,  
location, location?

SOUTHERN MANAGEMENT GROUP  
CLINTON HIGH SCHOOL  
9 JAN. 09



**Modify standards requiring a minimum number of students ...**







Put renovation options on a “level playing field”...





**Evaluate state support of new construction and student transportation...**



**Help districts fully evaluate ALL costs ...**





Encourage regular maintenance and use of new technology ...

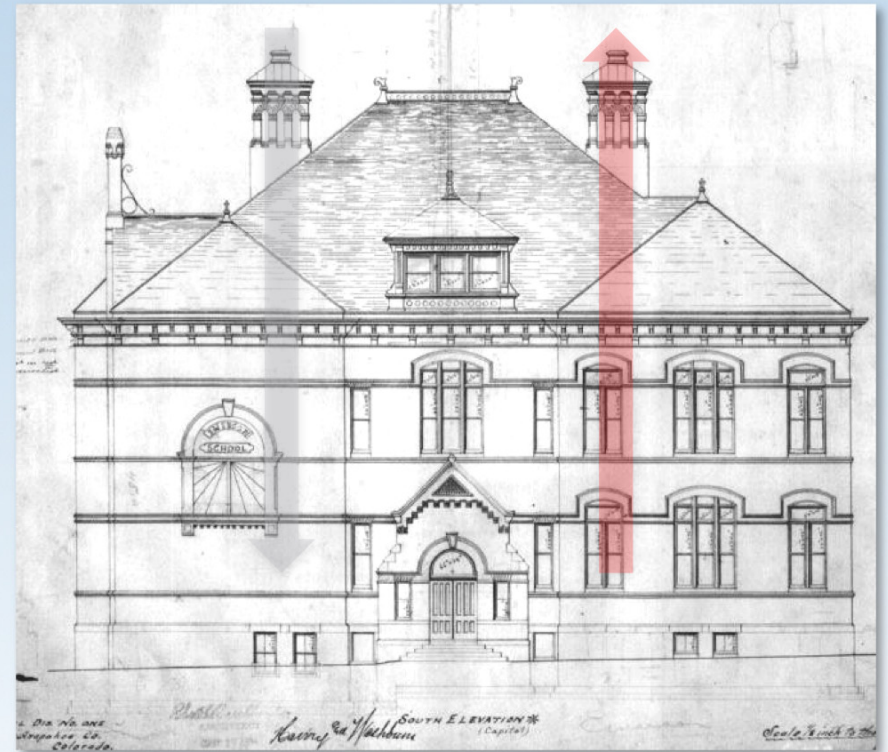
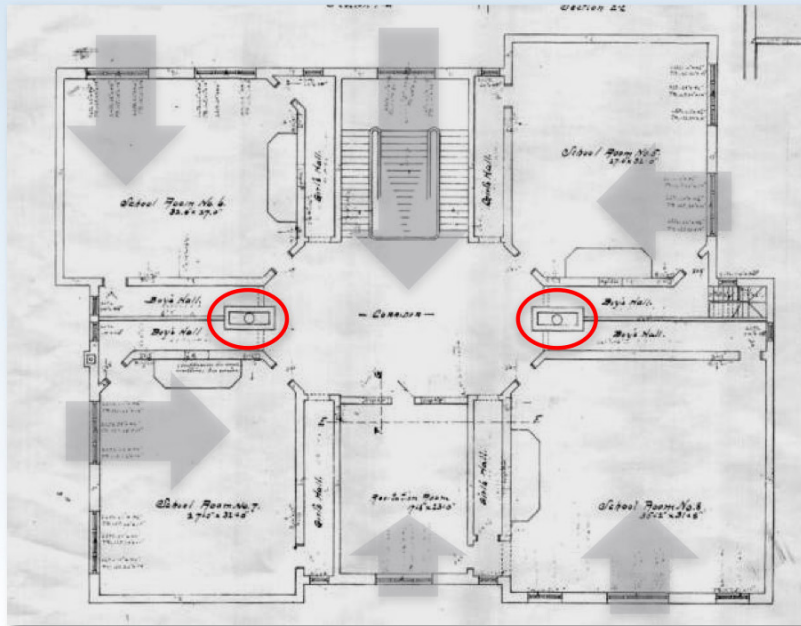




# Emerson School

## Restore passive systems

- Re-open interior spaces
- Make windows operable
- Harvest daylight
- Re-use ventilation chimneys



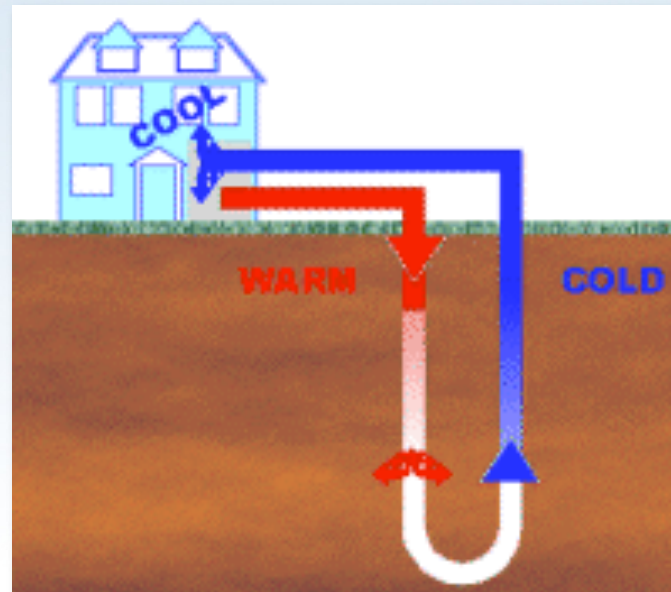


# Emerson School



## Add efficient new systems

- Geothermal field under parking lot
- 100% of cooling
- 80% of heating





# Emerson School

## Take advantage of location

- Walk score: 91/100
- Multiple bus routes
- Greatly enhanced landscape
- New bike-share kiosk





# For More Information...

Renee Kuhlman  
National Trust for  
Historic Preservation

Phone: 202-588-6234

[renee\\_kuhlman@nthp.org](mailto:renee_kuhlman@nthp.org)

[www.PreservationNation.org/walk-to-school](http://www.PreservationNation.org/walk-to-school)

